


Characteristics


- Decorative round air curtain for vertical or horizontal installation.
- Self-supporting casing construction made of galvanized plated steel, finished in structural epoxy-polyester white RAL 9016 or silver grey RAL 9006 as standard. Other colours or stainless steel construction are available on request.
- Low noise centrifugal double inlet fans driven by an external rotor motor with built in thermal protection contact. Provided with five speed selection.
- "P" type includes water heated coil. "E" type includes electrical shielded element, three power stages with power switches included. "A" type is without heating, air only.
- Anodised aluminium blow-out vanes, airfoil shaped, adjustable from 0 to 15° each side.
- Control panel and 20m of telephonic cable with fast connectors type RJ45 (Plug & Play), included. Optional: Interface to connect to BMS.
- Ceiling, wall and floor support (tailor-made) options available.

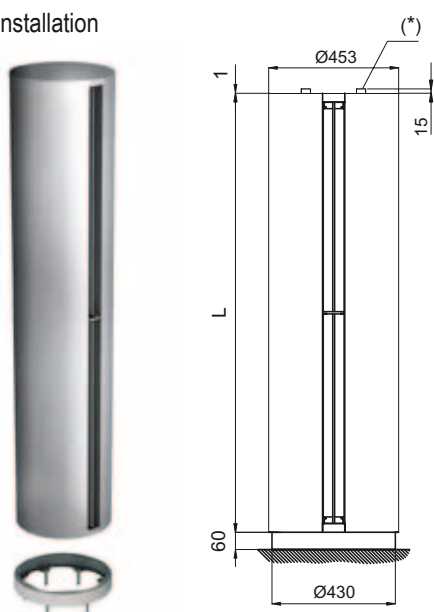
Specifications

Model	Airflow m3/h	Heating Capacity 80/60°C	Water Drop Pressure 80/60°C	Water Connections 80/60°C	Heating Capacity 60/40°C	Water Drop Pressure 60/40°C	Water Connections 60/40°C	Electrical Heating Capacity 3x400V-50Hz	Fans Power 230V-50Hz	Fans Current 230V-50Hz	Noise Level (5 m)	Weight kg
		kW	Pa		kW	Pa		kW	kW	A	dB(A)	
RUND M 1000 P	1875	10,52	890	2x3/4"	9,04	4450	2x3/4"	-	0,558	2,52	54	47
RUND M 1000 E	1950	-	-	-	-	-	-	3/6/9	0,558	2,52	54	49
RUND M 1000 A	1950	-	-	-	-	-	-	-	0,558	2,52	54	42
RUND M 1500 P	2500	16,14	700	2x3/4"	13,28	6390	2x3/4"	-	0,744	3,36	55	71
RUND M 1500 E	2600	-	-	-	-	-	-	4/8/12	0,744	3,36	55	75
RUND M 1500 A	2600	-	-	-	-	-	-	-	0,744	3,36	55	63
RUND M 2000 P	3750	24,22	2020	2x3/4"	19,11	5140	2x3/4"	-	1,116	5,04	56	90
RUND M 2000 E	3900	-	-	-	-	-	-	6/12/18	1,116	5,04	56	97
RUND M 2000 A	3900	-	-	-	-	-	-	-	1,116	5,04	56	79
RUND M 2500 P	4375	28,66	3750	2x3/4"	22,80	3930	2x3/4"	-	1,302	5,88	57	101
RUND M 2500 E	4550	-	-	-	-	-	-	6/12/18	1,302	5,88	57	108
RUND M 2500 A	4550	-	-	-	-	-	-	-	1,302	5,88	57	88
RUND M 3000 P	5000	34,08	6220	2x3/4"	27,23	6510	2x3/4"	-	1,488	6,72	58	112
RUND M 3000 E	5200	-	-	-	-	-	-	8/16/24	1,488	6,72	58	119
RUND M 3000 A	5200	-	-	-	-	-	-	-	1,488	6,72	58	99
RUND G 1000 P	2700	13,10	1300	2x3/4"	11,31	6850	2x3/4"	-	0,765	3,33	55	52
RUND G 1000 E	2775	-	-	-	-	-	-	5/10/15	0,765	3,33	55	54
RUND G 1000 A	2775	-	-	-	-	-	-	-	0,765	3,33	55	46
RUND G 1500 P	3600	20,30	1050	2x3/4"	16,72	9410	2x3/4"	-	1,020	4,44	56	77
RUND G 1500 E	3700	-	-	-	-	-	-	7,5/15/22,5	1,020	4,44	56	81
RUND G 1500 A	3700	-	-	-	-	-	-	-	1,020	4,44	56	68
RUND G 2000 P	5400	30,40	3320	2x3/4"	24,18	7860	2x3/4"	-	1,530	6,66	57	100
RUND G 2000 E	5550	-	-	-	-	-	-	10/20/30	1,530	6,66	57	107
RUND G 2000 A	5550	-	-	-	-	-	-	-	1,530	6,66	57	89
RUND G 2500 P	6300	36,03	5700	2x3/4"	28,94	6020	2x3/4"	-	1,785	7,77	58	109
RUND G 2500 E	6475	-	-	-	-	-	-	10,7/21,3/32	1,785	7,77	58	118
RUND G 2500 A	6475	-	-	-	-	-	-	-	1,785	7,77	58	98
RUND G 3000 P	7200	42,94	9540	2x3/4"	34,63	10100	2x3/4"	-	2,040	8,88	59	119
RUND G 3000 E	7400	-	-	-	-	-	-	10,7/21,3/32	2,040	8,88	59	128
RUND G 3000 A	7400	-	-	-	-	-	-	-	2,040	8,88	59	108



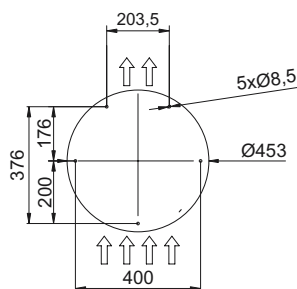
Layouts and dimensions

Vertical installation

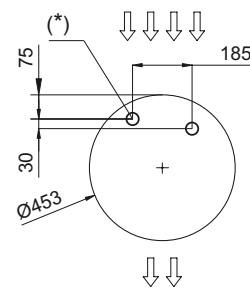
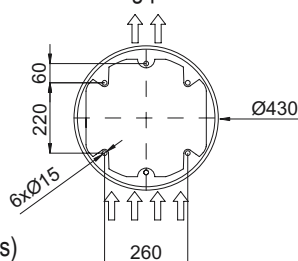


(*) IN/OUT Water pipes connection (in water heated units)

Floor fixing points without foot



Floor fixing points with foot



	L
RUND 1000	1025
RUND 1500	1525
RUND 2000	2030
RUND 2500	2530
RUND 3000	2980

Horizontal installation



Ceiling fixation through threaded rods



Wall/ceiling fixation through arms



Wall/ceiling fixation through angle supports



Wall fixation through lateral arms



Floor fixation (goalpost)